



**MIDDLE SCHOOL STUDY
JACKSON COUNTY PUBLIC SCHOOLS**

JULY 16, 2018

The Architects were directed by Jackson County Schools Administration to study alternative proposals to provide physical facilities to accommodate a Pre-K – 5, Middle School, 6 – 8 and High School 9 – 12 Education Program for all school facilities except Blue Ridge School which is Pre-K – 12.

Previous Studies and Previous Construction

In the 1990s the School Administration studied a Middle School organization patterned on K – 5, 6 – 8, and 9 – 12 for the school system. A wide range of community comment was solicited. The community consensus was that the historic Jackson County K – 8 and 9 – 12 was to be maintained indefinitely.

Several school facilities expansion projects were put on hold until after the school organization decision was made and the Jackson County Board of Commissioners obtained funding through the State-sponsored Certificates of Participation Program (COPS) which allows long-range funding of facilities without passage of voter-based bond issues. Beginning in 1999, the following K – 8 schools constructed significant additions:

- Scotts Creek Elementary School new 500-student capacity 97,000 SF New Elementary School on a new site.
- Renovate existing Scotts Creek Elementary School into School of Alternatives.
- Blue Ridge School 12,000 SF High School addition.
- Smoky Mountain Elementary School 16,500 SF 6 – 8 classroom wing.
- Fairview Elementary School 15,700 SF 7 – 8 classroom wing.
- Smoky Mountain High School 17,900 workforce building 9 – 12.

Total area added 1999 – 2002 for K – 8 and 9 – 12 school system: 159,100 SF.

Having community consensus on a K – 8 and 9 – 12 organizational system, the Jackson County Board of Commissioners and the Jackson County Board of Education committed to keeping the location of the High School at the 1959 location and upgrading and replacing obsolete portions of the facility. Significant additions and renovations were:

- 2002: 13,250 SF Kitchen/Cafeteria Addition.
- 2003: 12,930 SF Lobby/Administrative Addition/renovation.
- 2004: 21,500 SF Science Building Addition.
- 2014: 56,730 SF Gymnasium and Performing Arts Addition.

Total area added 2002 – 2014 for K – 8 and 9 – 12 School System: 104,410 SF.

Total area added system-wide 1999 – 2014: 159,100 SF + 104,410 SF = 263,510 SF.

OPTIONS TO CHANGE JACKSON COUNTY PUBLIC SCHOOLS SYSTEM TO A MIDDLE SCHOOL PLAN OF ORGANIZATION

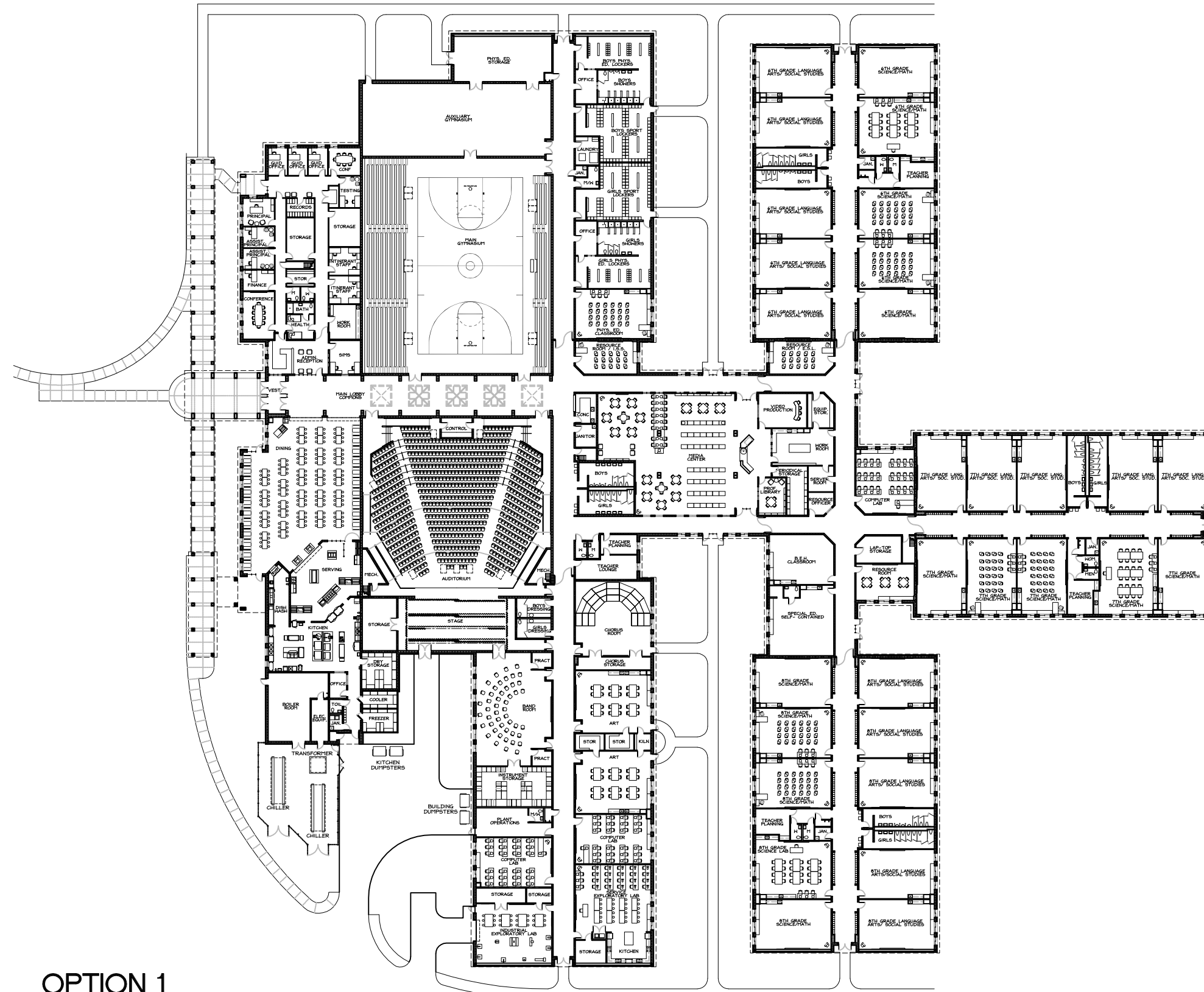
A Middle School provides physical facilities for grades 6, 7 and 8. The total Jackson County student enrollment for grades 6, 7 and 8 (excluding Blue Ridge School) is 731 students for school year 2018, 2019: consisting of 6th Grade – 266, 7th Grade – 215, 8th Grade – 250.

A student enrollment of 731 students can be accommodated in a single school facility. If the Middle School is located in proximity to Smoky Mountain High School bus transportation and also parent delivery and pick up issues are simplified if the same buses transport both Middle School students and High School students. All High School students in Jackson County (excluding Blue Ridge School and Southwest Community College Early College) also attend Smoky Mountain High School.

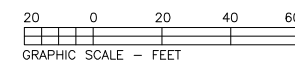
For an 800-student Middle School, a traditional Middle School program provides approximately nine (9) Core Curriculum classroom facilities, and one Science Laboratory in a home room wing for each grade. For specialty classrooms such as computers, special education, band, chorus, arts, Career Technical Education, physical education and Media Center, students travel from the home room wing to the specialty classrooms. This physical organization of classrooms allows for team teaching. Instructors sometimes remain the same for Grades 6, 7 and 8 (looping). This team-teaching delivery system is difficult to implement if core curriculum classrooms are not located in close proximity within the wing for each grade.

Attached is a Prototype Plan DSP No. 120-4378 for an 800-student Middle School with a gross building area of 120,332 SF on a 38-acre site.

GRADE SIX			
LA/SS	4	850	3,400
MATH/SCIENCE	4	850	3,400
LANGUAGE LAB	1	850	850
SCIENCE LAB	1	1,062	1,062
SUBTOTAL			8,712
GRADE SEVEN			
LA/SS	4	850	3,400
MATH/SCIENCE	4	850	3,400
LANGUAGE LAB	1	850	850
SCIENCE LAB	1	1,062	1,062
SUBTOTAL			8,712
GRADE EIGHT			
LA/SS	4	850	3,400
MATH/SCIENCE	4	850	3,400
LANGUAGE LAB	1	850	850
SCIENCE LAB	1	1,062	1,062
SUBTOTAL			8,712
ARTS			
ART STORAGE # KILN	2	1,889	2,378
CHORUS ROOM	1	1,267	1,267
CHORUS STORAGE	1	220	220
BAND ROOM	1	1,736	1,736
BAND STORAGE	1	688	688
PRACTICE ROOM	2	70	140
SUBTOTAL			6,429
AUDITORIUM			
HOUSE - 822 SEATS	1	6,456	6,456
STAGE	1	1,200	1,200
WINGS	2	200	400
DRESSING ROOM	2	151	302
STORAGE	1	410	410
CONTROL BOOTH	1	138	138
SUBTOTAL			8,906
SMALL GROUP/EXCEPTIONAL			
RESOURCE ROOM	1	481	481
SELF-CONTAINED	1	1,030	1,030
B.E.H. RESOURCE ROOM	1	719	719
I.S.S. RESOURCE ROOM	1	462	462
SUBTOTAL			2,692
WORKFORCE DEVELOPMENT			
INDUSTRIAL EXPLORATORY	1	1,273	1,273
SERVICE EXPLORATORY	1	1,675	1,675
COMPUTER LAB	3	848	2,544
LAP-TOP STORAGE	1	271	271
SUBTOTAL			5,763
MEDIA CENTER			
MAIN USE AREA	1	3,894	3,894
FILE SERVER ROOM	1	1,698	1,698
SUBTOTAL			5,592
PHYSICAL EDUCATION			
MAIN GYM - 800 SEATS	1	9,249	9,249
AUXILIARY GYM	1	3,121	3,121
P.E. STORAGE	1	1,035	1,035
BOYS LOCKER/SHOWER	1	916	916
GIRLS LOCKER/SHOWER	1	916	916
BOYS SPORT LOCKER	1	839	839
GIRLS SPORT LOCKER	1	839	839
OFFICE	2	68	136
LAUNDRY	1	153	153
P.E. CLASSROOM	1	875	875
CONCESSION	1	134	134
FIELD HOUSE	1	800	800
SUBTOTAL			19,215
ADMINISTRATION			
RECEPTION/SECRETARIAL	1	463	463
PRINCIPAL	1	200	200
ASSISTANT PRINCIPAL	2	150	300
FINANCE	1	150	150
SIMS	1	175	175
HEALTH ROOM	1	200	200
WORKROOM	1	250	250
CONFERENCE	1	361	361
RECORDS	1	119	119
OFFICE STORAGE	1	105	105
RESOURCE OFFICER	1	121	121
SUBTOTAL			2,444
GUIDANCE			
GUIDANCE OFFICE	3	120	360
TESTING/OFFICE	1	150	150
CONFERENCE	1	200	200
GUIDANCE STORAGE	1	48	48
ITINERANT STAFF	2	200	400
SUBTOTAL			1,158
STAFF SUPPORT			
TEACHER PLANNING	4	165	660
TEACHER LOUNGE	1	314	314
SUBTOTAL			974
BUILDING SUPPORT			
COMPUTER SERVER	1	150	150
COMPTONS	1	1,741	1,741
GENERAL/BOOK STORAGE	1	660	660
PLANT OPERATIONS	1	504	504
STORAGE BUILDING	1	325	325
CANOPY @ 33% OF TOTAL	1	2,110	2,110
SUBTOTAL			5,490
FOOD SERVICE			
DINING - 267 SEATS	1	3,530	3,530
SERVING	1	1,021	1,021
KITCHEN	1	2,415	2,415
SUBTOTAL			6,772
NET BUILDING AREA			91,569
CIRCULATION, ETC.	31.4%		28,763
GROSS BUILDING AREA			120,332



**OPTION 1
PROTOTYPE DSP NO. 120-4378
800 STUDENT MIDDLE SCHOOL FLOOR PLAN**



TOTAL BUILDING AREA = 120,332 SF

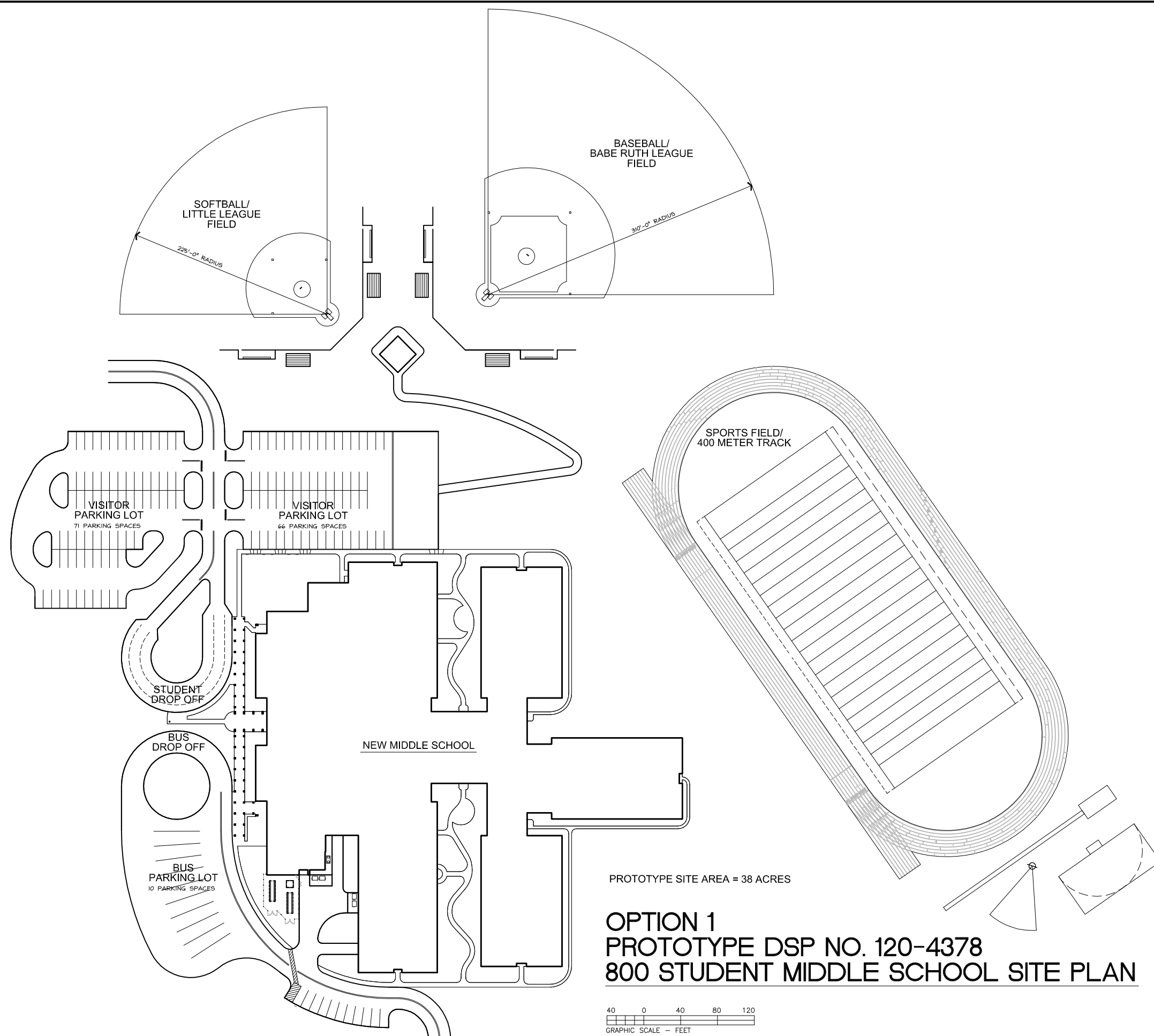
COST SUMMARY
120,332 SF • \$250/SF = \$30,083,000

Site Development

A Middle School will likely have an athletic program which will compete with Middle Schools in adjacent counties for Grades 7 and 8. This requires the site be adequate to construct athletic fields for baseball, softball, track, football and soccer.

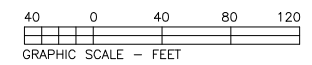
The Middle School will probably have joint school bus transportation shared with the High School, assuming school schedules are coordinated. This requires bus parking for up to 15 buses at the Middle School site. If the school dismissal is earlier at the Middle School and later at the High School, this will require bus parking for 13 to 15 buses which remain during the day at the Middle School.

Competitive sports will also include basketball, volleyball and wrestling which will require a spectator Gymnasium to seat the entire school (800) and sufficient parking for spectators. The Prototype Middle School example attached shows a 38-acre site with site development described above.



PROTOTYPE SITE AREA = 38 ACRES

OPTION 1
PROTOTYPE DSP NO. 120-4378
800 STUDENT MIDDLE SCHOOL SITE PLAN



MIDDLE
SCHOOL
STUDY

JACKSON
COUNTY
SCHOOLS

Project Number
1816

Date
JULY 16, 2018

DesA1.dwg
Sheet Number

1-1

CRITICAL FACILITY NEEDS INVENTORY

During 2013, the Architects and Consulting Engineers visited eight Jackson County Public Schools Campuses. Interviews were conducted with each Principal, the Assistant Superintendent, Dr. Kimberly Elliott and the Maintenance Director, Mr. Joe Buchanan. A physical survey was conducted of each facility. Schematic Diagrams were prepared for each school. The student enrollment, North Carolina Department of Public Instruction Capacity and total constructed area of school facilities, not including Modular Classrooms and Auxiliary Services Facilities was as follows:

Tab	School	Grade	Enrollment	NCDPI Capacity	Area
1	Smoky Mountain High School	9-12	867	1197	236,580 SF
2	Blue Ridge School	Pre-K-13	366	584	67,800 SF
3	Scotts Creek School	K-8	483	543	97,440 SF
4	School of Alternatives	5-12	76	307	34,840 SF
5	Cullowhee Valley Elementary School	K-8	590	791	99,030 SF
6	Smokey Mountain Elementary School	K-8	427	537	69,350 SF
7	Fairview Elementary School	K-8	828	912	105,410 SF
	SWCC Early College	9-12	145		0 SF
Total Jackson County Public Schools K-12		K-12	3,782		710,450 SF

The area of Administrative Auxiliary Service Facilities is as follows:

8	Administration Building				9,884 SF
	School Bus Garage				5,920 SF
Total Construction Area					726,254 SF

NC Department of Public Instruction School Capacity Worksheet for 2018 – 2019 is summarized as follows, and projected 2018 – 2019 enrollment is as follows:

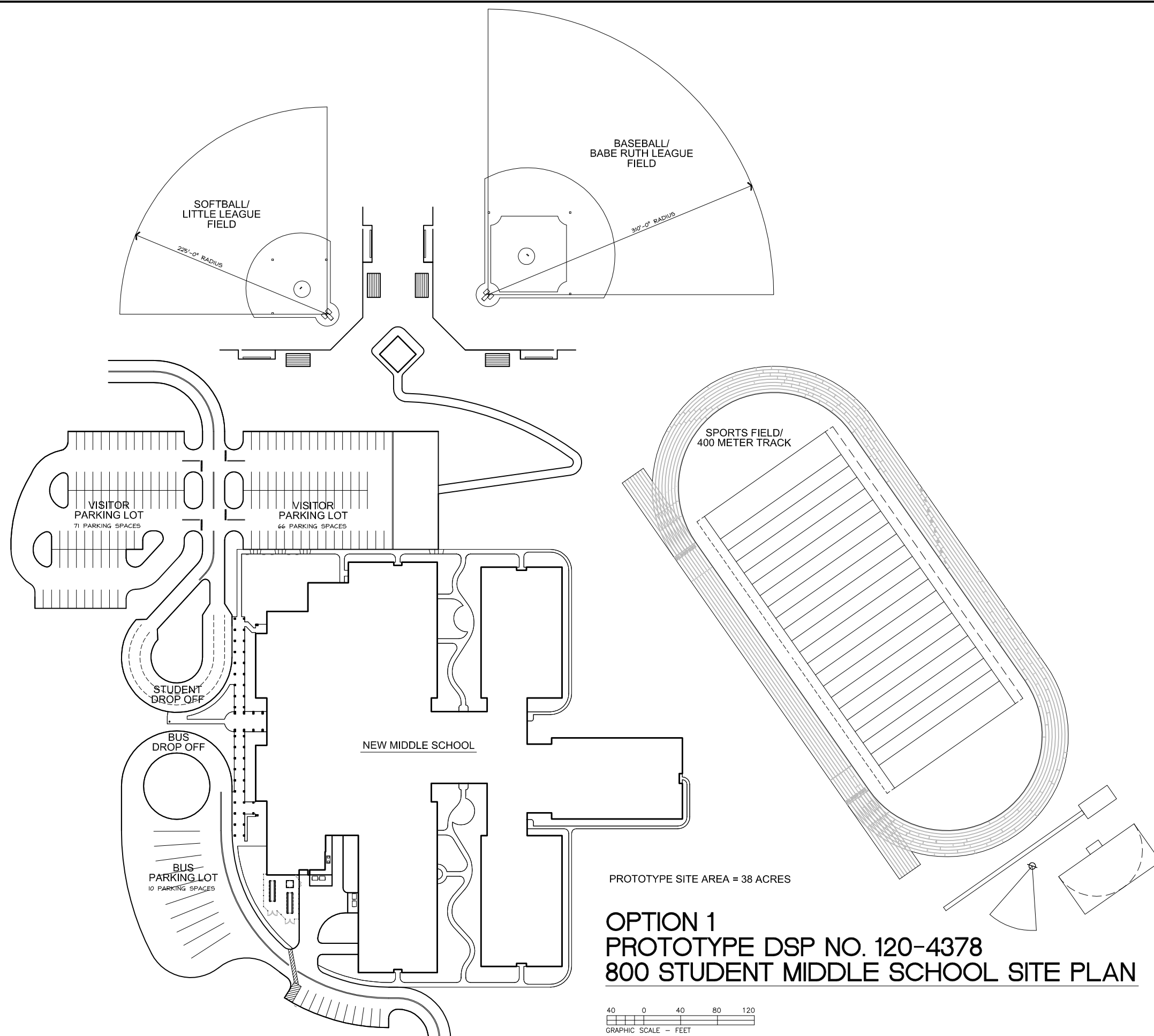
• Scotts Creek Elementary School		• Cullowee Valley Elementary School	
Total capacity	543	Total capacity	791
Total students 2018 - 2019	478	Total students 2018 - 2019	594
• Blue Ridge School		• Smoky Mountain Elementary School	
Total capacity	584	Total capacity	537
Total students 2018 - 2019	330 (Pre-K – 13)	Total students 2018 - 2019	349
• Smoky Mountain High School		• Fairview Elementary School	
Total capacity	1197	Total capacity	912
Total students 2018 – 2019	862	Total students 2018 - 2019	808
• School of Alternatives			
Total capacity	307		
Total students 2018 - 2019	77		

School Classroom Capacity as set forth in NCDPI Guidelines finds that no Jackson County Schools were theoretically over capacity. Principals at each school were interviewed and it was found that with the exception of Cullowee Valley Elementary School no schools are beyond capacity. Cullowee Valley Elementary School’s principal stated that up to four classrooms could be justified for organizational reasons.

Middle School Prototype Facilities

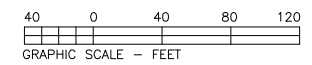
Jackson County Schools for 2018 - 2019 has a total Middle School enrollment of 732 students, Grades 6, 7 and 8. There are several options to accommodate Jackson County Middle School students, as follows:

- Option 1: Construct a new Middle School for 800 students on a new site which would reduce student population at all Elementary Schools allowing for significant student capacity growth at all facilities.
- Option 2: Construct a new Middle School facility for 800 students at the existing High School. Smoky Mountain High School to become a combined High School/Middle School.
- Option 3: Construct a new High School for 1,000 students on a new site and convert the existing High School into a Middle School.
- Option 4: Renovate one existing elementary school to become an 800 student Middle School. Redistrict displaced elementary students to other elementary schools using classrooms vacated by Middle School students. Redistrict all remaining elementary schools.



PROTOTYPE SITE AREA = 38 ACRES

OPTION 1
PROTOTYPE DSP NO. 120-4378
800 STUDENT MIDDLE SCHOOL SITE PLAN



MIDDLE
SCHOOL
STUDY

JACKSON
COUNTY
SCHOOLS

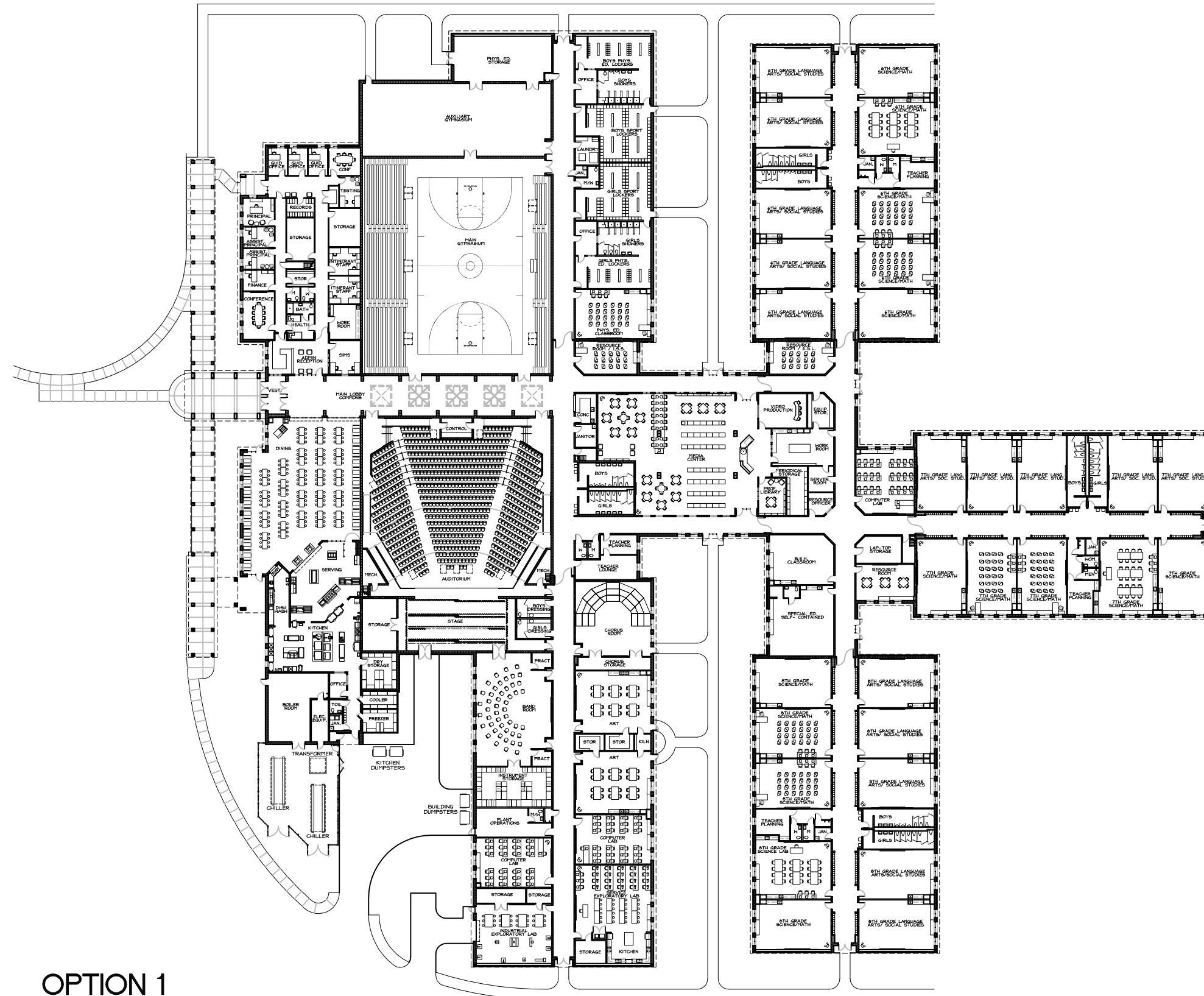
Project Number
1816

Date
JULY 16, 2018

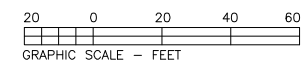
DesA1.dwg
Sheet Number

1-1

GRADE SIX			
LA/SS	4	850	3,400
MATH/SCIENCE	4	850	3,400
LANGUAGE LAB	1	850	850
SCIENCE LAB	1	1,062	1,062
SUBTOTAL			8,712
GRADE SEVEN			
LA/SS	4	850	3,400
MATH/SCIENCE	4	850	3,400
LANGUAGE LAB	1	850	850
SCIENCE LAB	1	1,062	1,062
SUBTOTAL			8,712
GRADE EIGHT			
LA/SS	4	850	3,400
MATH/SCIENCE	4	850	3,400
LANGUAGE LAB	1	850	850
SCIENCE LAB	1	1,062	1,062
SUBTOTAL			8,712
ARTS			
ART STORAGE # KILN	2	1,889	2,378
CHORUS ROOM	1	1,267	1,267
CHORUS STORAGE	1	220	220
BAND ROOM	1	1,736	1,736
BAND STORAGE	1	688	688
PRACTICE ROOM	2	70	140
SUBTOTAL			6,429
AUDITORIUM			
HOUSE - 822 SEATS	1	6,456	6,456
STAGE	1	1,200	1,200
WINGS	2	200	400
DRESSING ROOM	2	151	302
STORAGE	1	410	410
CONTROL BOOTH	1	138	138
SUBTOTAL			8,906
SMALL GROUP/EXCEPTIONAL			
RESOURCE ROOM	1	481	481
SELF-CONTAINED	1	1,030	1,030
B.E.H. RESOURCE ROOM	1	719	719
I.S.S. RESOURCE ROOM	1	462	462
SUBTOTAL			2,692
WORKFORCE DEVELOPMENT			
INDUSTRIAL EXPLORATORY	1	1,273	1,273
SERVICE EXPLORATORY	1	1,675	1,675
COMPUTER LAB	3	848	2,544
LAP-TOP STORAGE	1	271	271
SUBTOTAL			5,763
MEDIA CENTER			
MAIN USE AREA	1	3,894	3,894
FILE SERVER ROOM	1	1,698	1,698
SUBTOTAL			5,592
PHYSICAL EDUCATION			
MAIN GYM - 800 SEATS	1	9,249	9,249
AUXILIARY GYM	1	3,121	3,121
P.E. STORAGE	1	1,035	1,035
BOYS LOCKER/SHOWER	1	916	916
GIRLS LOCKER/SHOWER	1	916	916
BOYS SPORT LOCKER	1	839	839
GIRLS SPORT LOCKER	1	839	839
OFFICE	2	68	136
LAUNDRY	1	153	153
P.E. CLASSROOM	1	875	875
CONCESSION	1	134	134
FIELD HOUSE	1	800	800
SUBTOTAL			19,215
ADMINISTRATION			
RECEPTION/SECRETARIAL	1	463	463
PRINCIPAL	1	200	200
ASSISTANT PRINCIPAL	2	150	300
FINANCE	1	150	150
SIMS	1	175	175
HEALTH ROOM	1	200	200
WORKROOM	1	250	250
CONFERENCE	1	361	361
RECORDS	1	119	119
OFFICE STORAGE	1	105	105
RESOURCE OFFICER	1	121	121
SUBTOTAL			2,444
GUIDANCE			
GUIDANCE OFFICE	3	120	360
TESTING/OFFICE	1	150	150
CONFERENCE	1	200	200
GUIDANCE STORAGE	1	48	48
ITINERANT STAFF	2	200	400
SUBTOTAL			1,158
STAFF SUPPORT			
TEACHER PLANNING	4	165	660
TEACHER LOUNGE	1	314	314
SUBTOTAL			974
BUILDING SUPPORT			
COMPUTER SERVER	1	150	150
COPIERS	1	1,741	1,741
GENERAL/BOOK STORAGE	1	660	660
PLANT OPERATIONS	1	504	504
STORAGE BUILDING	1	325	325
CANOPY @ 33% OF TOTAL	1	2,110	2,110
SUBTOTAL			5,490
FOOD SERVICE			
DINING - 267 SEATS	1	3,530	3,530
SERVING	1	1,021	1,021
KITCHEN	1	2,415	2,415
SUBTOTAL			6,772
NET BUILDING AREA			91,569
CIRCULATION, ETC.	31.4%		28,763
GROSS BUILDING AREA			120,332

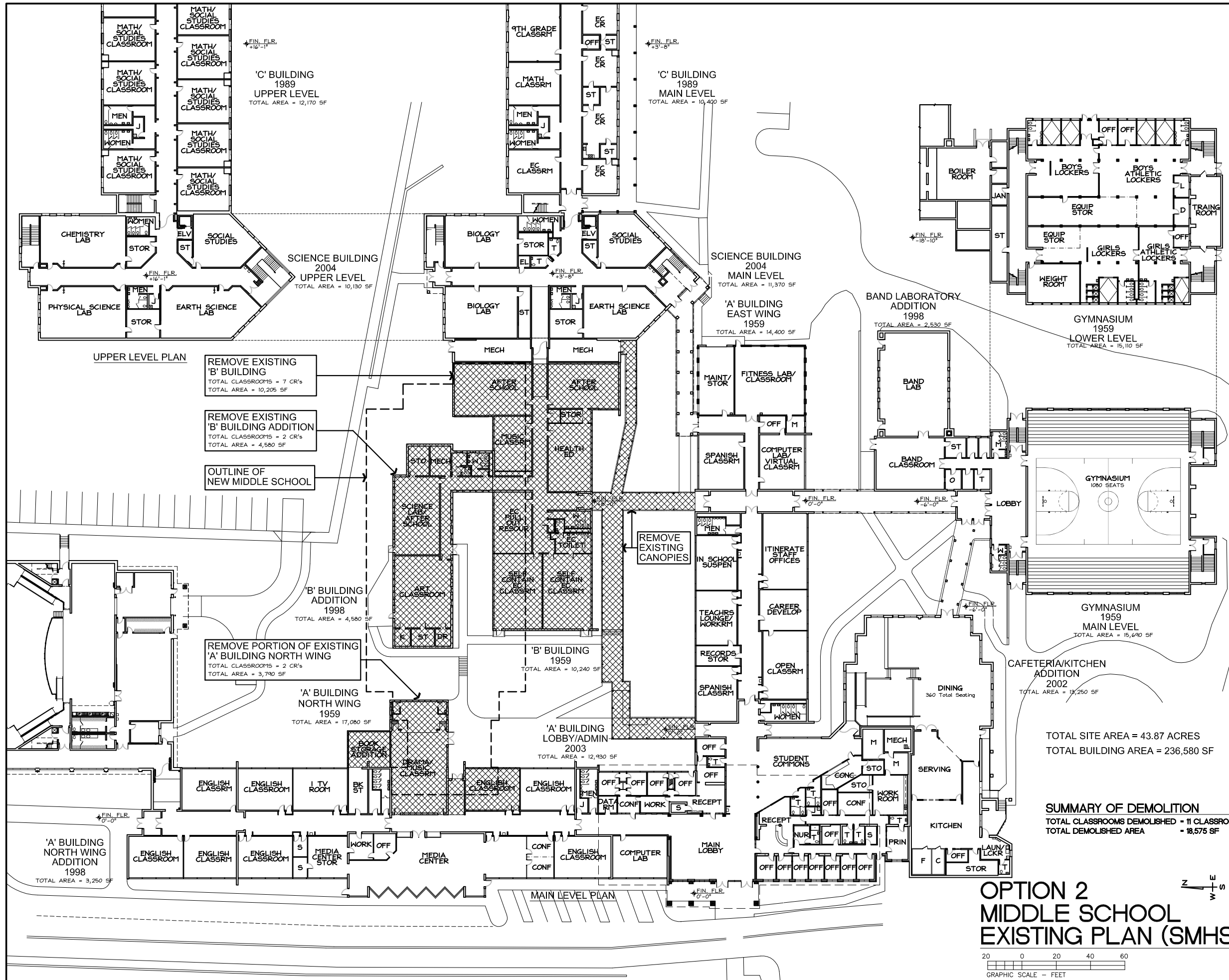


**OPTION 1
PROTOTYPE DSP NO. 120-4378
800 STUDENT MIDDLE SCHOOL FLOOR PLAN**



TOTAL BUILDING AREA = 120,332 SF

COST SUMMARY
120,332 SF • \$250/SF = \$30,083,000



MIDDLE SCHOOL STUDY

JACKSON COUNTY SCHOOLS

TOTAL SITE AREA = 43.87 ACRES
 TOTAL BUILDING AREA = 236,580 SF

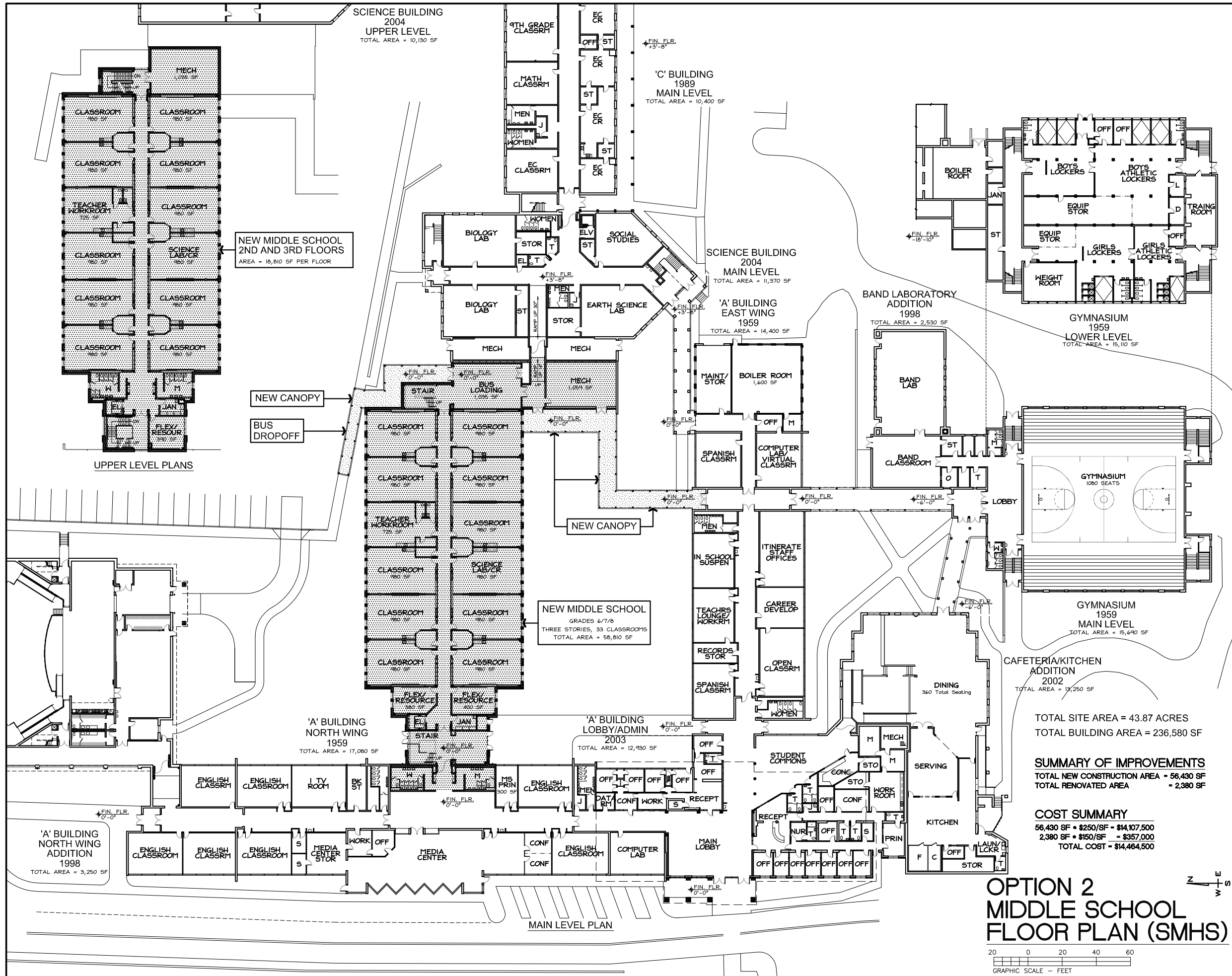
**OPTION 2
 MIDDLE SCHOOL
 EXISTING PLAN (SMHS)**

Project Number
 1816

Date
 JULY 16, 2018

Sheet Number

2-1



MIDDLE SCHOOL STUDY

JACKSON COUNTY SCHOOLS

TOTAL SITE AREA = 43.87 ACRES
TOTAL BUILDING AREA = 236,580 SF

SUMMARY OF IMPROVEMENTS
TOTAL NEW CONSTRUCTION AREA = 56,430 SF
TOTAL RENOVATED AREA = 2,380 SF

COST SUMMARY
56,430 SF = \$250/SF = \$14,107,500
2,380 SF = \$150/SF = \$357,000
TOTAL COST = \$14,464,500

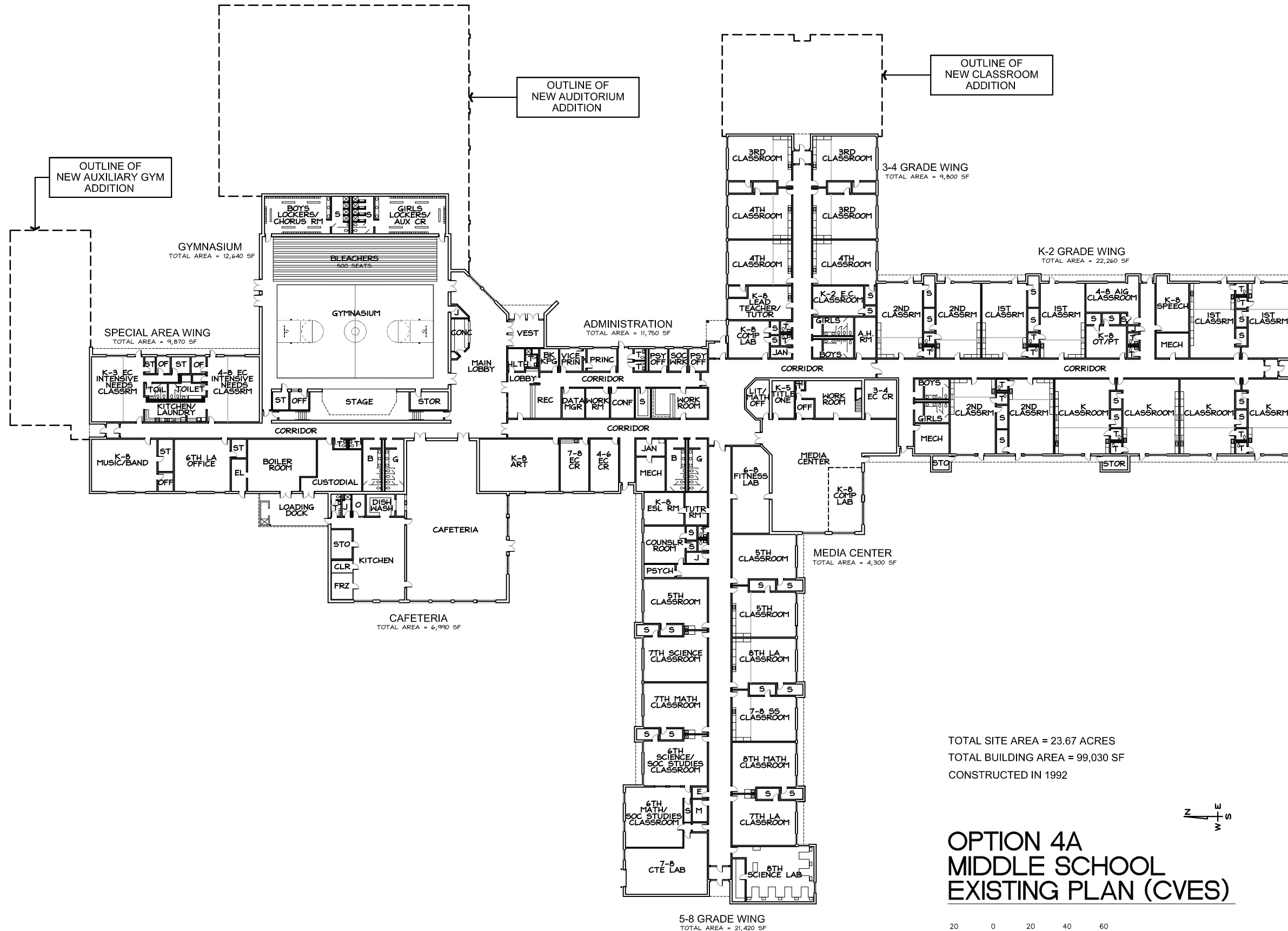
**OPTION 2
MIDDLE SCHOOL
FLOOR PLAN (SMHS)**

Project Number
1816

Date
JULY 16, 2018

Sheet Number

2-2



OUTLINE OF NEW CLASSROOM ADDITION

OUTLINE OF NEW AUDITORIUM ADDITION

OUTLINE OF NEW AUXILIARY GYM ADDITION

MIDDLE SCHOOL STUDY

JACKSON COUNTY SCHOOLS

TOTAL SITE AREA = 23.67 ACRES
 TOTAL BUILDING AREA = 99,030 SF
 CONSTRUCTED IN 1992

**OPTION 4A
 MIDDLE SCHOOL
 EXISTING PLAN (CVES)**

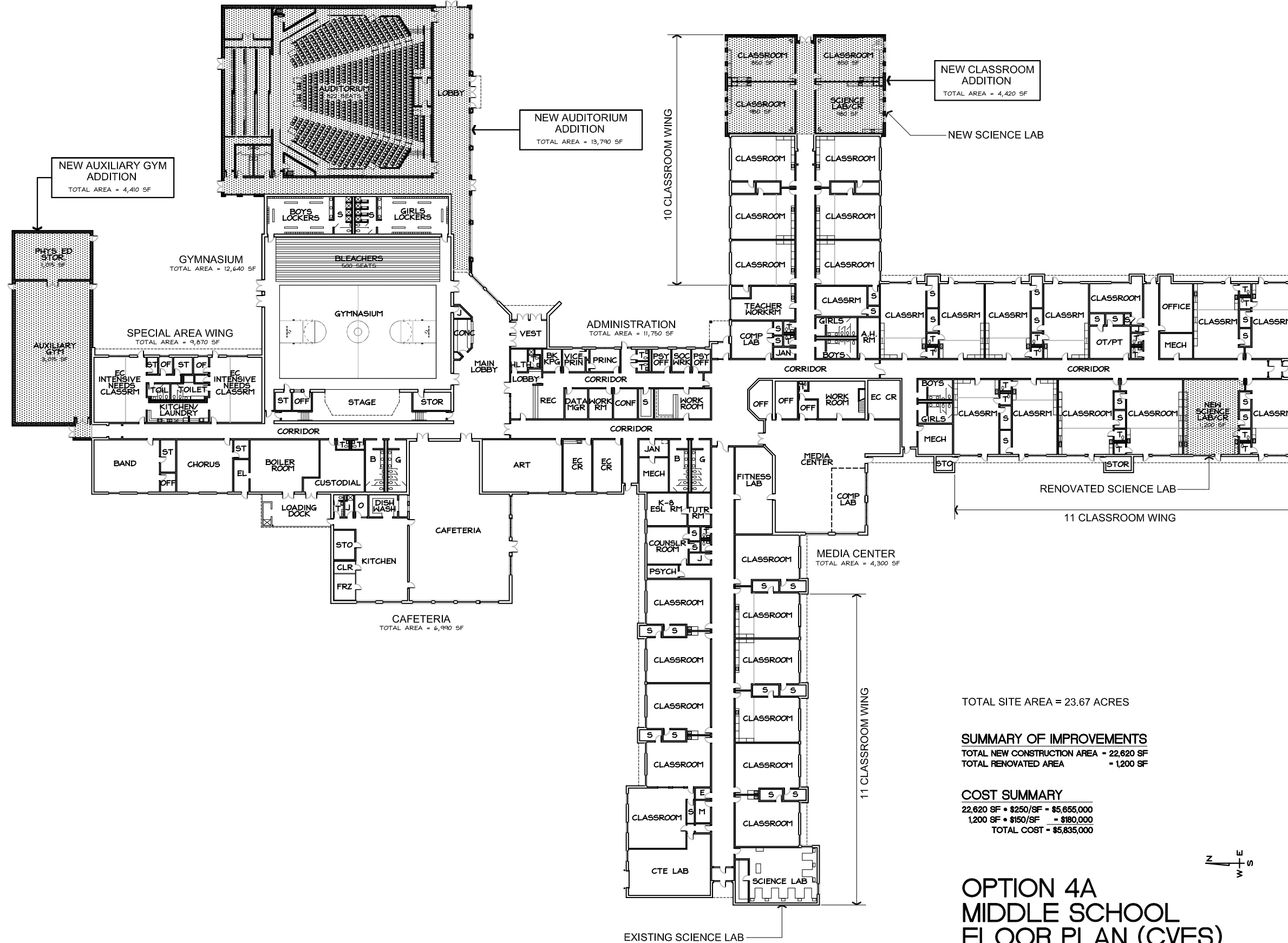


Project Number
 1816

Date
 JULY 16, 2018

Sheet Number

4A-1



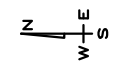
MIDDLE SCHOOL STUDY

JACKSON COUNTY SCHOOLS

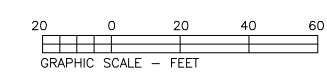
TOTAL SITE AREA = 23.67 ACRES

SUMMARY OF IMPROVEMENTS
 TOTAL NEW CONSTRUCTION AREA - 22,620 SF
 TOTAL RENOVATED AREA = 1,200 SF

COST SUMMARY
 22,620 SF • \$250/SF = \$5,655,000
 1,200 SF • \$150/SF = \$180,000
 TOTAL COST = \$5,835,000



**OPTION 4A
 MIDDLE SCHOOL
 FLOOR PLAN (CVES)**

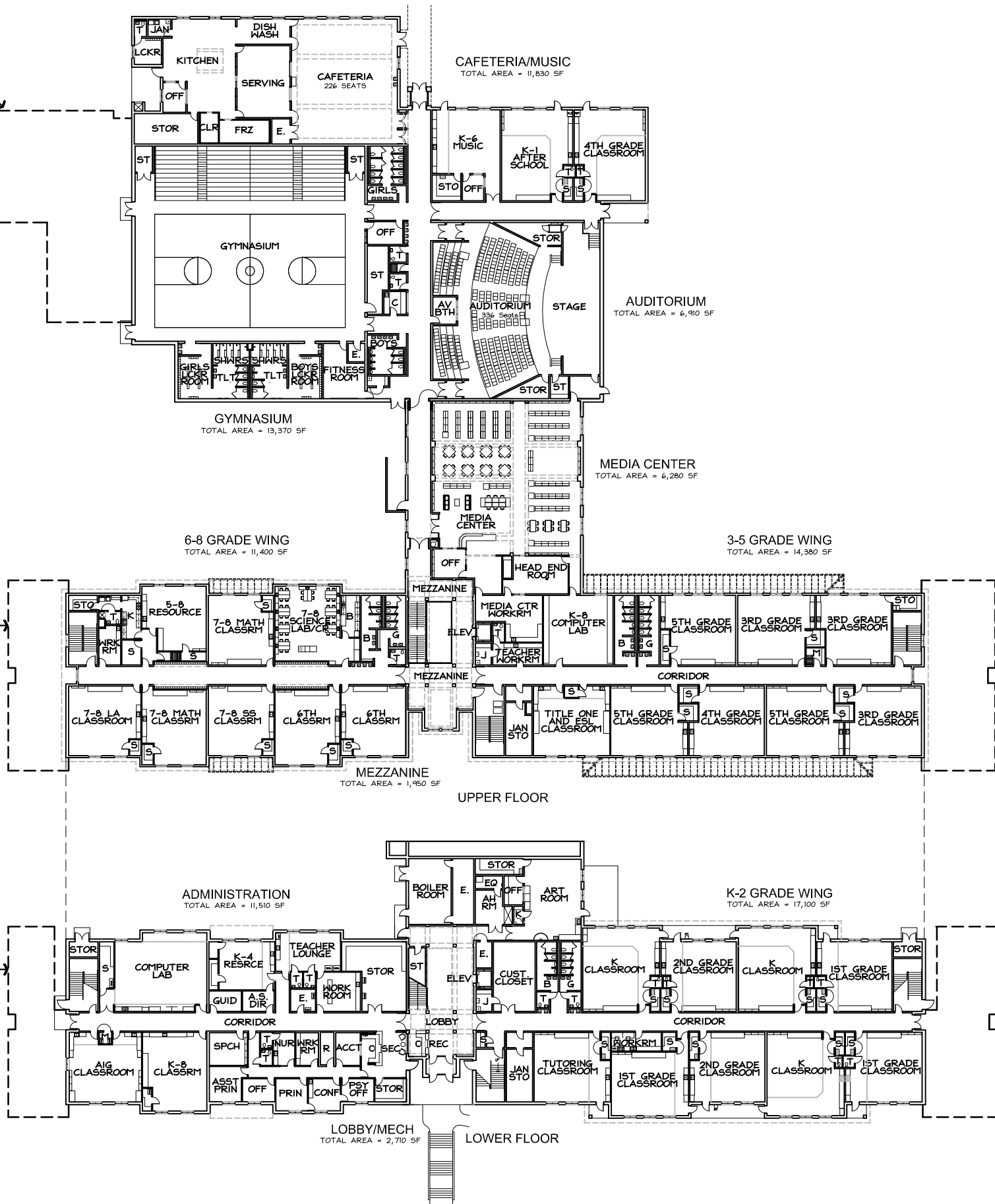


Project Number
 1816

Date
 JULY 16, 2018

Sheet Number
4A-2

OUTLINE OF NEW AUXILIARY GYM ADDITION



OUTLINE OF NEW CLASSROOM ADDITION

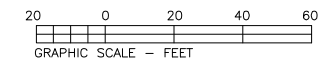
OUTLINE OF NEW CLASSROOM ADDITION

OUTLINE OF NEW CLASSROOM ADDITION

OUTLINE OF NEW CLASSROOM ADDITION

TOTAL SITE AREA = 31.63 ACRES
 TOTAL BUILDING AREA = 97,440 SF
 CONSTRUCTED IN 2001

**OPTION 4B
 MIDDLE SCHOOL
 EXISTING PLAN (SCS)**



MIDDLE SCHOOL STUDY

JACKSON COUNTY SCHOOLS

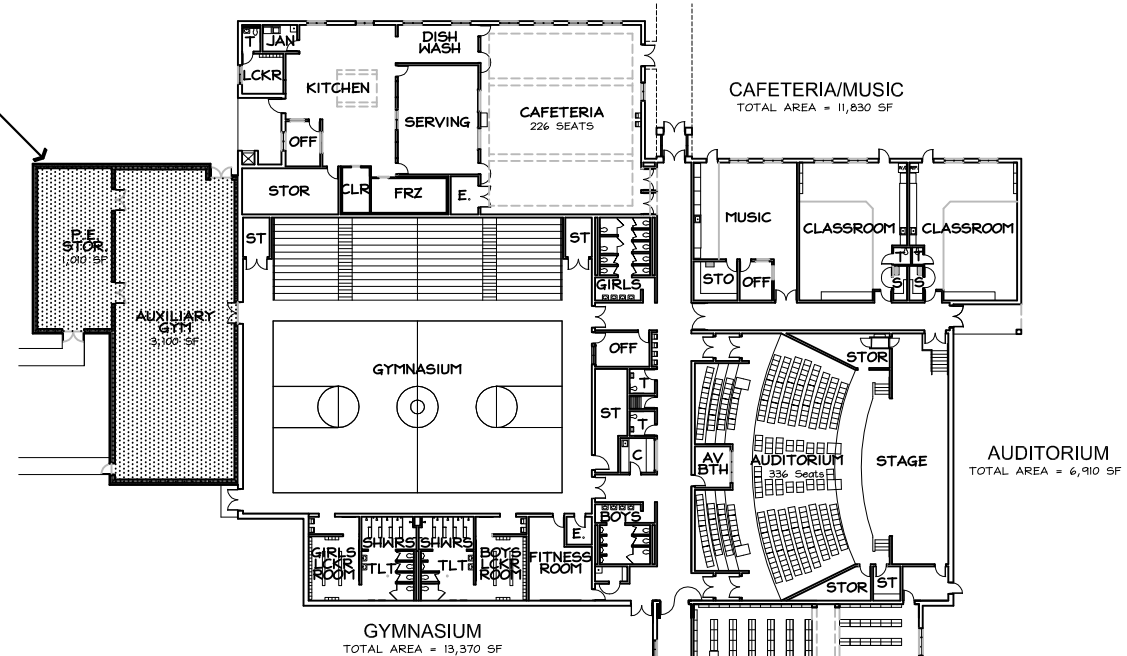
Project Number
 1816

Date
 JULY 16, 2018

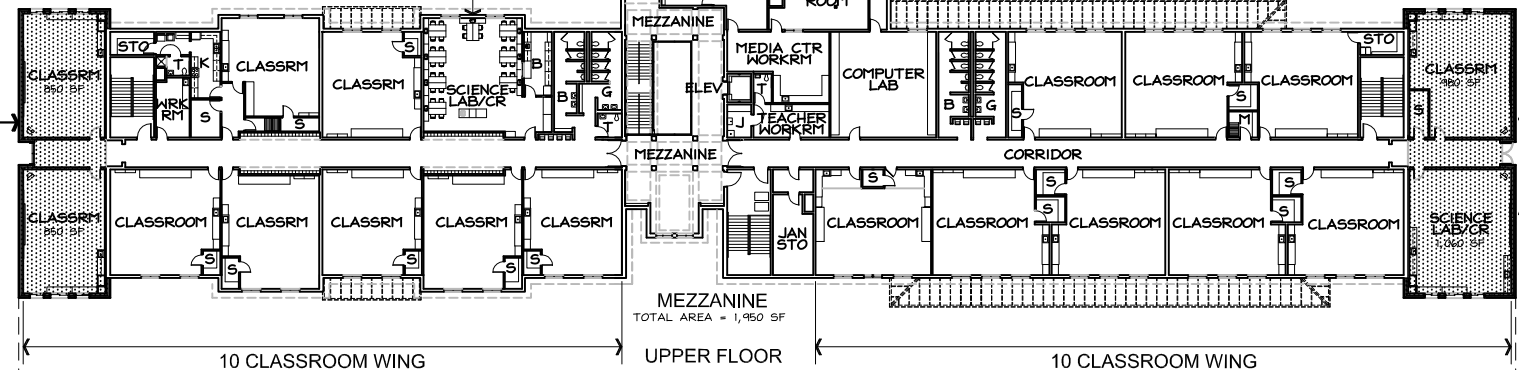
Sheet Number

4B-1

NEW AUXILIARY GYM ADDITION
TOTAL AREA = 4,010 SF



NEW CLASSROOM ADDITION
TOTAL AREA = 2,020 SF



NEW CLASSROOM ADDITION
TOTAL AREA = 2,500 SF

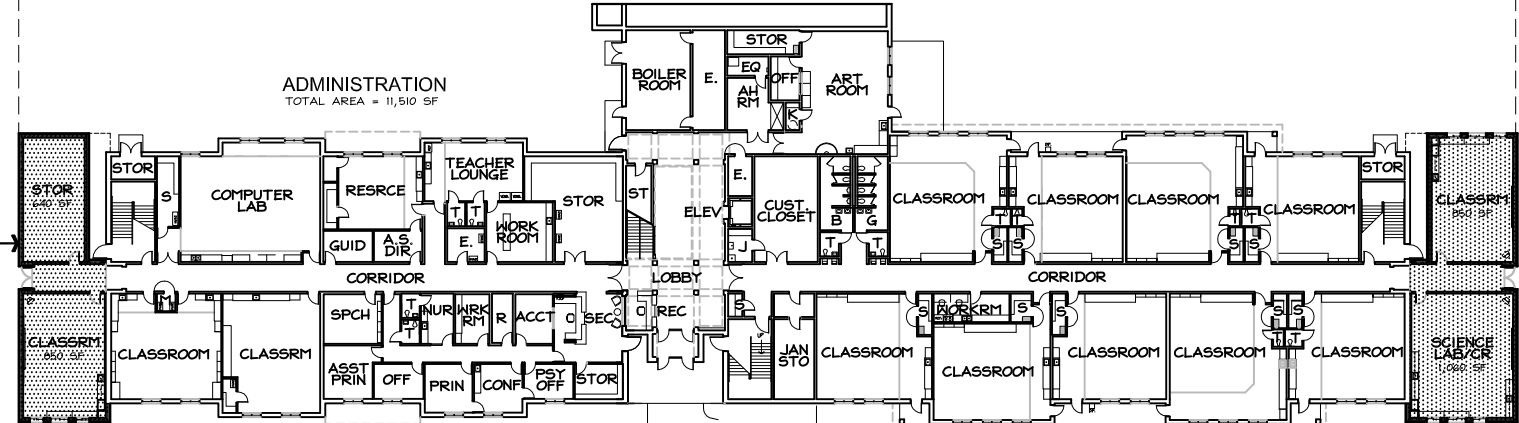
NEW SCIENCE LAB

TOTAL SITE AREA = 31.63 ACRES

SUMMARY OF IMPROVEMENTS
TOTAL NEW CONSTRUCTION AREA = 12,640 SF

COST SUMMARY
12,640 SF • \$250/SF = \$3,160,000

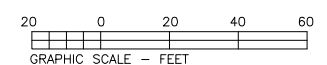
NEW CLASSROOM ADDITION
TOTAL AREA = 1,810 SF



NEW CLASSROOM ADDITION
TOTAL AREA = 2,300 SF

NEW SCIENCE LAB

**OPTION 4B
MIDDLE SCHOOL
FLOOR PLAN (SCS)**



MIDDLE SCHOOL STUDY

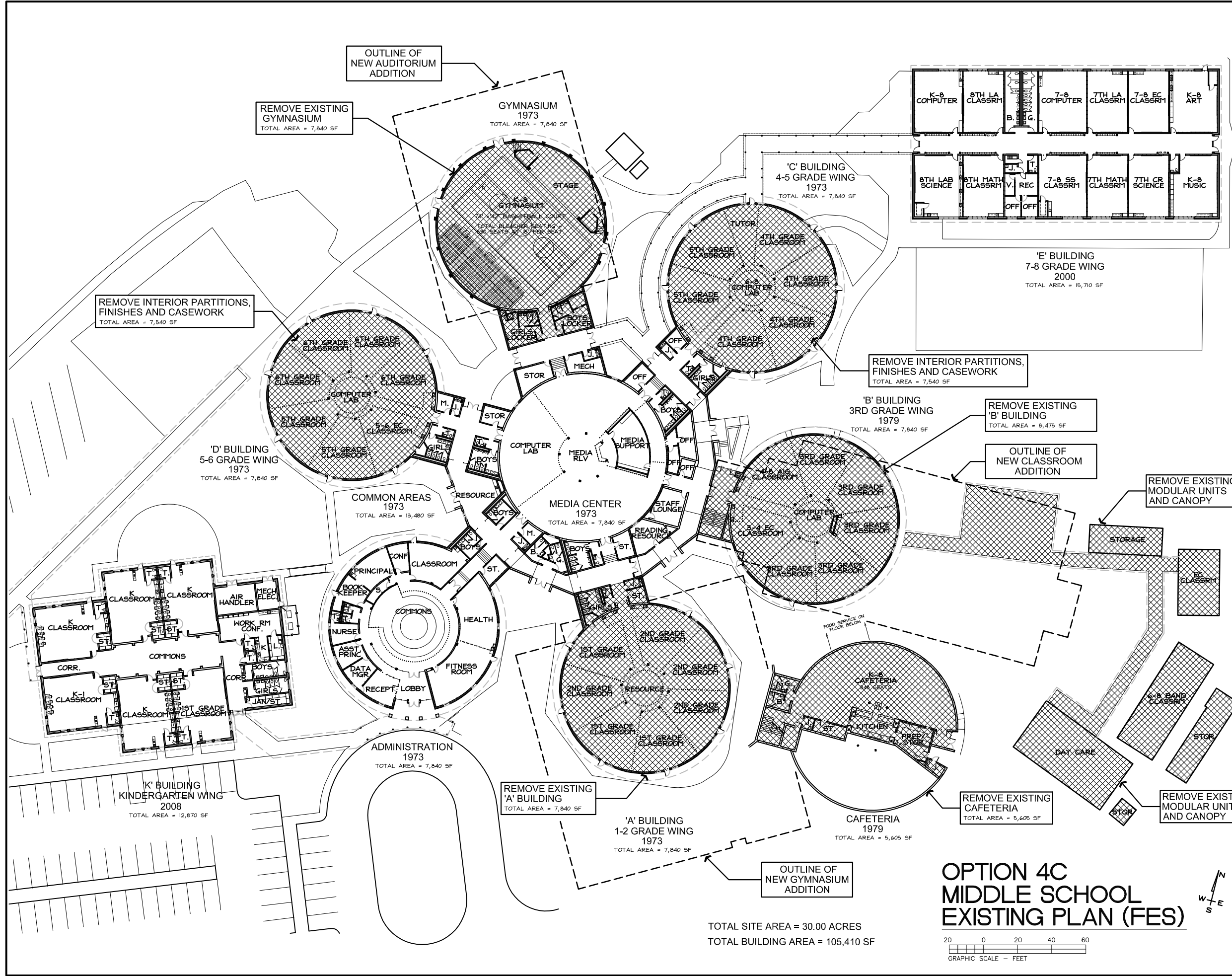
JACKSON COUNTY SCHOOLS

Project Number
1816

Date
JULY 16, 2018

Sheet Number

4B-2



MIDDLE SCHOOL STUDY

JACKSON COUNTY SCHOOLS

JACKSON COUNTY PSYCH SERVICES

Project Number
1816

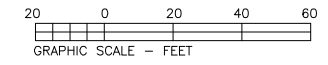
Date
JULY 16, 2018

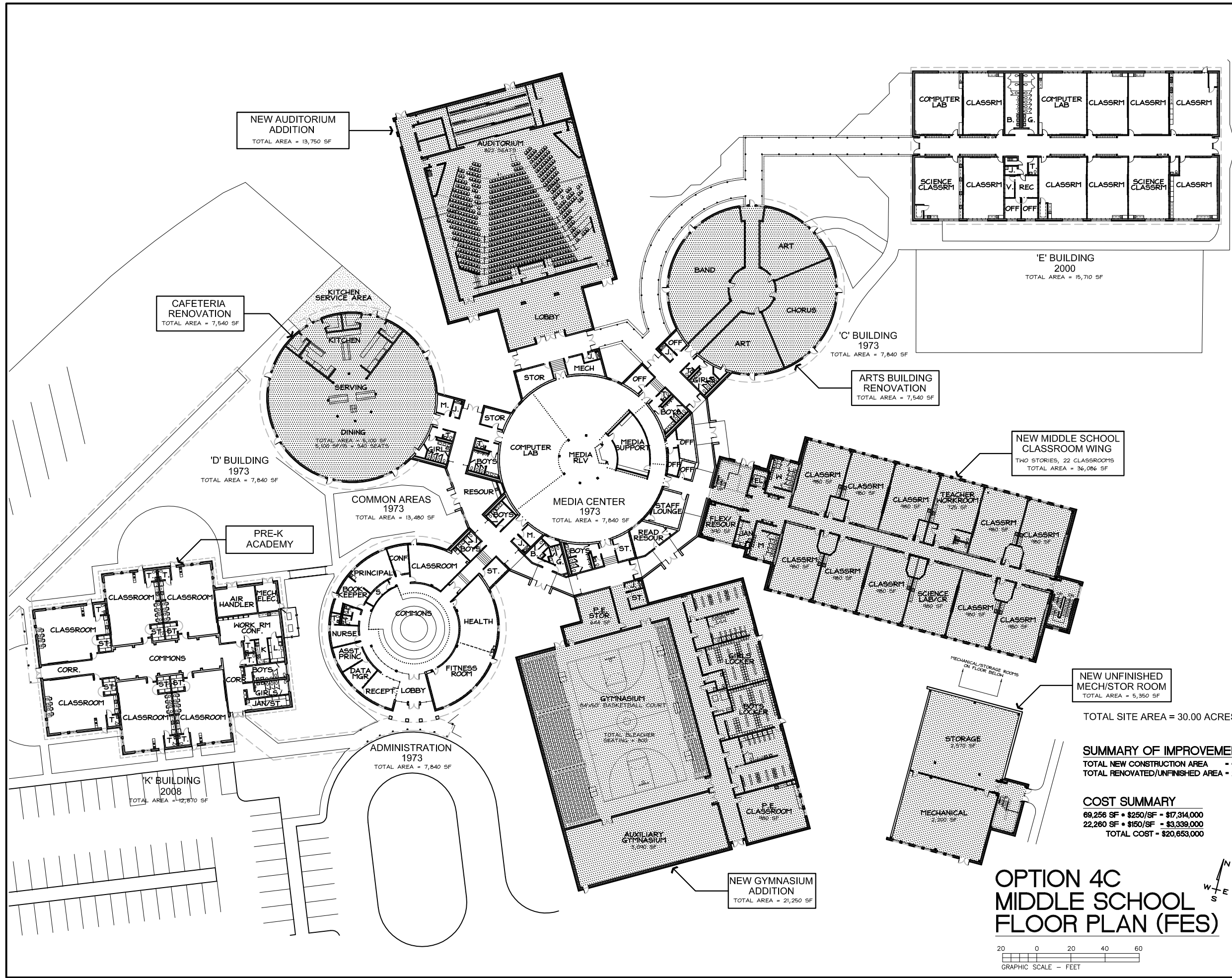
Sheet Number

4C-1

TOTAL SITE AREA = 30.00 ACRES
TOTAL BUILDING AREA = 105,410 SF

OPTION 4C
MIDDLE SCHOOL
EXISTING PLAN (FES)



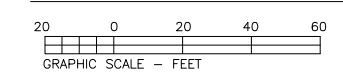


TOTAL SITE AREA = 30.00 ACRES

SUMMARY OF IMPROVEMENTS
TOTAL NEW CONSTRUCTION AREA - 69,256 SF
TOTAL RENOVATED/UNFINISHED AREA - 22,260 SF

COST SUMMARY
69,256 SF • \$250/SF = \$17,314,000
22,260 SF • \$150/SF = \$3,339,000
TOTAL COST = \$20,653,000

**OPTION 4C
MIDDLE SCHOOL
FLOOR PLAN (FES)**

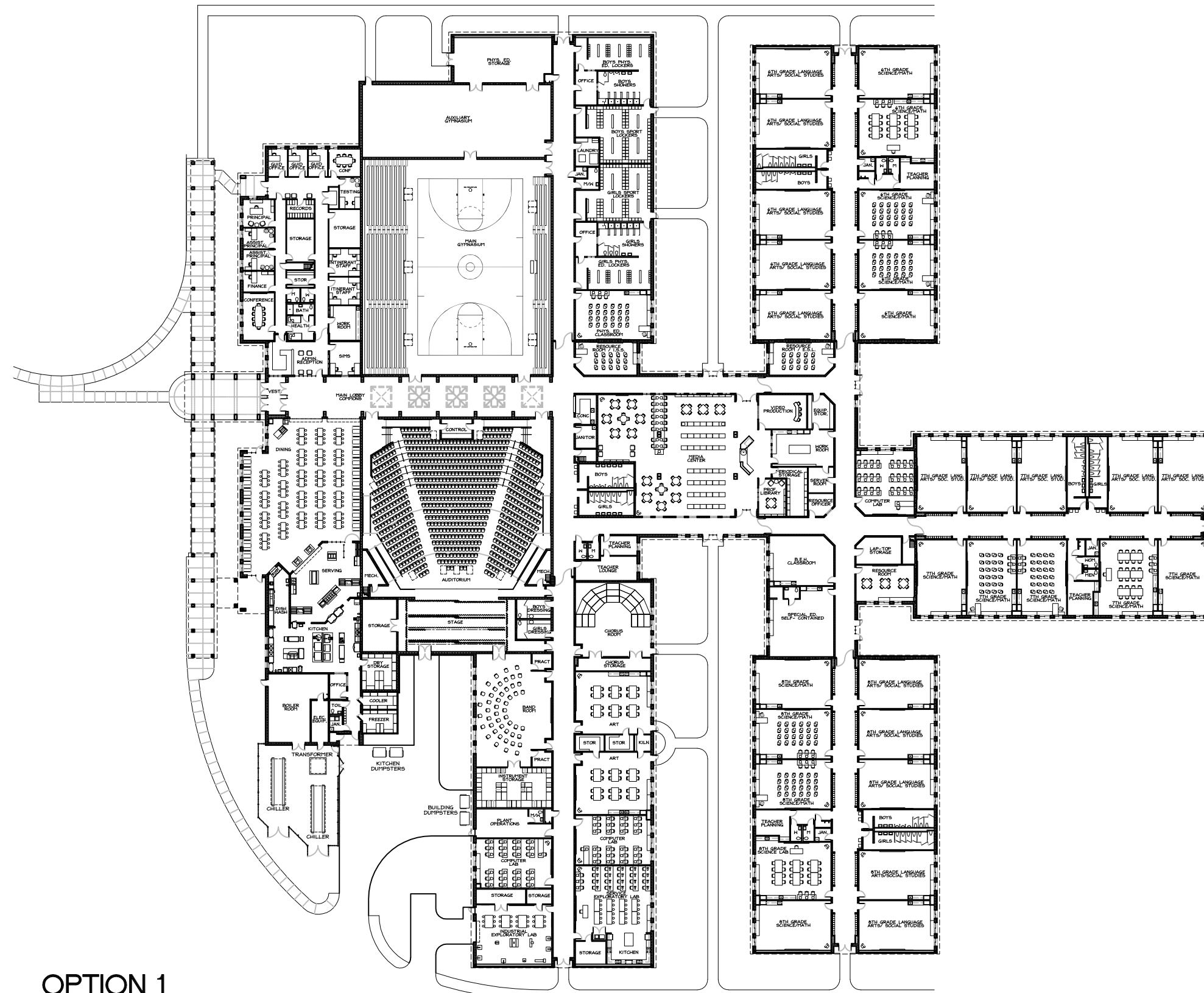


Project Number
1816

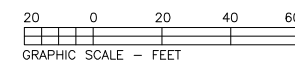
Date
JULY 16, 2018

Sheet Number
4C-2

GRADE SIX			
LA/SS	4	850	3,400
MATH/SCIENCE	4	850	3,400
LANGUAGE LAB	1	850	850
SCIENCE LAB	1	1,062	1,062
SUBTOTAL			8,712
GRADE SEVEN			
LA/SS	4	850	3,400
MATH/SCIENCE	4	850	3,400
LANGUAGE LAB	1	850	850
SCIENCE LAB	1	1,062	1,062
SUBTOTAL			8,712
GRADE EIGHT			
LA/SS	4	850	3,400
MATH/SCIENCE	4	850	3,400
LANGUAGE LAB	1	850	850
SCIENCE LAB	1	1,062	1,062
SUBTOTAL			8,712
ARTS			
ART STORAGE # KILN	2	1,889	2,378
CHORUS ROOM	1	1,267	1,267
CHORUS STORAGE	1	220	220
BAND ROOM	1	1,736	1,736
BAND STORAGE	1	688	688
PRACTICE ROOM	2	70	140
SUBTOTAL			6,429
AUDITORIUM			
HOUSE - 822 SEATS	1	6,456	6,456
STAGE	1	1,200	1,200
WINGS	2	200	400
DRESSING ROOM	2	151	302
STORAGE	1	410	410
CONTROL BOOTH	1	138	138
SUBTOTAL			8,906
SMALL GROUP/EXCEPTIONAL			
RESOURCE ROOM	1	481	481
SELF-CONTAINED	1	1,030	1,030
B.E.H. RESOURCE ROOM	1	719	719
I.S.S. RESOURCE ROOM	1	462	462
SUBTOTAL			2,692
WORKFORCE DEVELOPMENT			
INDUSTRIAL EXPLORATORY	1	1,273	1,273
SERVICE EXPLORATORY	1	1,675	1,675
COMPUTER LAB	3	848	2,544
LAP-TOP STORAGE	1	271	271
SUBTOTAL			5,763
MEDIA CENTER			
MAIN USE AREA	1	3,894	3,894
FILE SERVER ROOM	1	1,698	1,698
SUBTOTAL			5,592
PHYSICAL EDUCATION			
MAIN GYM - 800 SEATS	1	9,249	9,249
AUXILIARY GYM	1	3,121	3,121
P.E. STORAGE	1	1,035	1,035
BOYS LOCKER/SHOWER	1	916	916
GIRLS LOCKER/SHOWER	1	916	916
BOYS SPORT LOCKER	1	839	839
GIRLS SPORT LOCKER	1	839	839
OFFICE	2	68	136
LAUNDRY	1	153	153
P.E. CLASSROOM	1	875	875
CONCESSION	1	134	134
FIELD HOUSE	1	800	800
SUBTOTAL			19,215
ADMINISTRATION			
RECEPTION/SECRETARIAL	1	463	463
PRINCIPAL	1	200	200
ASSISTANT PRINCIPAL	2	150	300
FINANCE	1	150	150
SIMS	1	175	175
HEALTH ROOM	1	200	200
WORKROOM	1	250	250
CONFERENCE	1	361	361
RECORDS	1	119	119
OFFICE STORAGE	1	105	105
RESOURCE OFFICER	1	121	121
SUBTOTAL			2,444
GUIDANCE			
GUIDANCE OFFICE	3	120	360
TESTING/OFFICE	1	150	150
CONFERENCE	1	200	200
GUIDANCE STORAGE	1	48	48
ITINERANT STAFF	2	200	400
SUBTOTAL			1,158
STAFF SUPPORT			
TEACHER PLANNING	4	165	660
TEACHER LOUNGE	1	314	314
SUBTOTAL			974
BUILDING SUPPORT			
COMPUTER SERVER	1	150	150
COPIERS	1	1,741	1,741
GENERAL/BOOK STORAGE	1	660	660
PLANT OPERATIONS	1	504	504
STORAGE BUILDING	1	325	325
CANOPY @ 33% OF TOTAL	1	2,110	2,110
SUBTOTAL			5,490
FOOD SERVICE			
DINING - 267 SEATS	1	3,530	3,530
SERVING	1	1,021	1,021
KITCHEN	1	2,415	2,415
SUBTOTAL			6,772
NET BUILDING AREA			91,569
CIRCULATION, ETC.	31.4%		28,763
GROSS BUILDING AREA			120,332



**OPTION 1
PROTOTYPE DSP NO. 120-4378
800 STUDENT MIDDLE SCHOOL FLOOR PLAN**



TOTAL BUILDING AREA = 120,332 SF

COST SUMMARY
120,332 SF • \$250/SF = \$30,083,000

**JACKSON COUNTY PUBLIC SCHOOLS – MIDDLE SCHOOL STUDY
COST SUMMARY
JULY 12, 2018**

	OPTION	BUILDING AREA (SF)	\$/SF	COST		SUMMARY
1	New Middle School	120,332	\$250		1	\$30,083,000
2	Smoky Mountain High School/Middle School					
	Classroom Wing Addition	56,430	\$250	\$14,107,500		
	Classroom Wing Renovation	2,380	\$150	\$357,000	2	\$14,464,500
3	New High School	156,000	\$250		3	\$39,000,000
4A	Middle School - Cullowee Valley Elementary School					
	Auditorium Addition	13,790	\$250	\$3,447,500		
	Auxiliary Gymnasium Addition	4,410	\$250	\$1,102,500		
	Classroom Addition (4 Classrooms)	4,420	\$250	\$1,105,000		
	Science Laboratory Renovation	1,200	\$150	\$180,000		
	TOTAL MIDDLE SCHOOL				4A	\$5,835,000
4B	Middle School - Scotts Creek Elementary School					
	Auxiliary Gymnasium Addition	4,010	\$250	\$1,002,500		
	Classroom Additions (8 Classrooms)	8,630	\$250	\$2,157,500		
	TOTAL MIDDLE SCHOOL				4B	\$3,160,000
4C	Middle School - Fairview Elementary School					
	Classroom Addition	36,086	\$250	\$9,021,500		
	Classroom Addition Mechanical Room	5,350	\$150	\$802,500		
	Gymnasium Addition	20,650	\$250	\$5,162,500		
	Gymnasium Renovation	600	\$150	\$90,000		
	Auditorium Addition	12,520	\$250	\$3,130,000		
	Auditorium Renovation	1,230	\$150	\$184,500		
	Cafeteria Renovation	7,540	\$150	\$1,131,000		
	Arts Building Renovation	7,540	\$150	\$1,131,000		
	TOTAL MIDDLE SCHOOL				4C	\$20,653,000